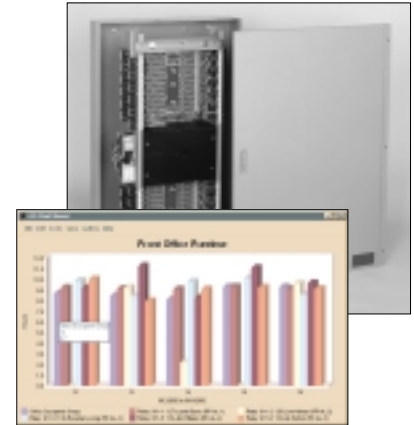




# WinControl Software

- ◆ Feature-rich lighting control software for documenting, programming, and controlling lighting control systems
- ◆ User-friendly Windows®-based interface
- ◆ Comprehensive activity logging and trend analysis
- ◆ Optional real-time graphics
- ◆ On-line or off-line programming
- ◆ Multi-level, user-defined password access
- ◆ Programs and monitors multiple sites
- ◆ Object oriented component software with ActiveX support for high-level integration with other systems



## System Description

Designed for use with the Complete Control panel system, The Watt Stopper's WinControl lighting automation software provides ease of administration and programming in a user-friendly format. The tools include lighting schedules, and comprehensive activity logging and trend analysis functions. WinControl is compatible with various panel systems, with versions available for The Watt Stopper's Complete Control products (formerly by Horton Controls), and GE Total Lighting Control products.

## Operation

The Windows-based software provides the basic user interface for programming, monitoring and control functions for the system. Administrators can use the software to program their systems off-line, and then execute updates with a simple command. The system's distributed processing capability allows administrators to download programming to each panel, which then executes the programming independently. On-line operation enables users to monitor and upload runtime data for analysis. Users can connect to specific sites via modem, network, or remote Internet connections using optional hardware. Once programmed using WinControl, Complete Control panel intelligence cards execute control scenarios, including scheduled OFF with blink warning, time-delay overrides with blink warning, or automatic daylight switching with occupant interlock/override.

## Features

WinControl provides system operation and administration functions for multiple sites. The software supports multiple levels of access with password protection defined at the user level, so secure management and integrity of the entire system is safeguarded. Reports that document control system devices and schedules streamline system administration and maintenance. In addition, users can rely on the activity logging and trend analysis features to track actual lighting usage (down to the individual relay level, if desired), verify that the system is operating as intended, identify and diagnose potential concerns, and evaluate payback. Standard trending reports include exception reports, run time graphs, and activity log reports. All reports are configurable to user needs via Visual Basic scripts. In addition, the software offers a simulator function that enables users to test proposed programming prior to deploying it on the system.

For customers with our earlier RSOFT software program, WinControl offers import capabilities so that existing scheduling and archival data is easily migrated to the new software. The first time RSOFT users run WinControl, they can execute the option to import an existing RSOFT site without affecting any of the data related to that site.

Integration-friendly features such as object oriented design and ActiveX support ensure that WinControl can be easily interfaced with other building control systems.

### The Watt Stopper®, Inc.

2800 De La Cruz Blvd.  
Santa Clara, CA 95050

Tel: (408) 988-5331  
Fax: (408) 988-5373

National Technical Support  
(800) 879-8585

# WinControl Technical Information

## Specifications

- ◆ One-step import capability for migrating data from RSOFT DOS versions
- ◆ On- or off-line programming with simple system update
- ◆ Versions available for The Watt Stopper Complete Control panels (formerly by Horton Controls) and GE Total Lighting Control products
- ◆ Activity logging to individual relay level
- ◆ Simulate operation of system devices
- ◆ Explorer-like view of all system components
- ◆ Documentation reports of system devices and lighting schedules
- ◆ System provides activity logs, runtime graphs and reports, and exception reports for trend analysis
- ◆ Remote operation capabilities via modem, network, or TCP/IP connection

## System Requirements

- ◆ Compatible with Windows 95/98 , NT 4.x, and Windows 2000
- ◆ 64 MB RAM
- ◆ CD-ROM
- ◆ 100 MB free hard disk space
- ◆ Monitor with 16-bit color, minimum 800x600 resolution

## Ordering Information

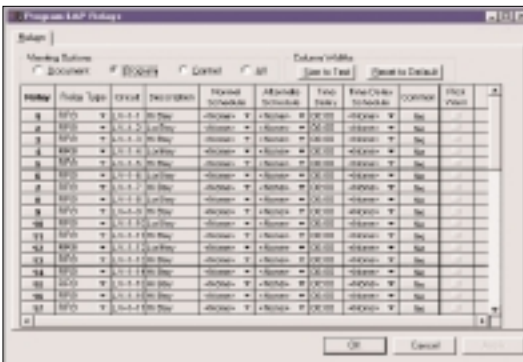
Catalog No.	Description
WCHSTD	WinControl software (standard package)for Complete Control systems
WCGSTD	WinControl software (standard package)for GE Total Lighting Control systems

Add to the end of catalog no.: number of relays in system (i.e., 250 for up to 250 relays, 500 for up to 500 relays, 750 for up to 750 relays, UL for unlimited number of relays). Purchase of a single software license entitles use on one computer.

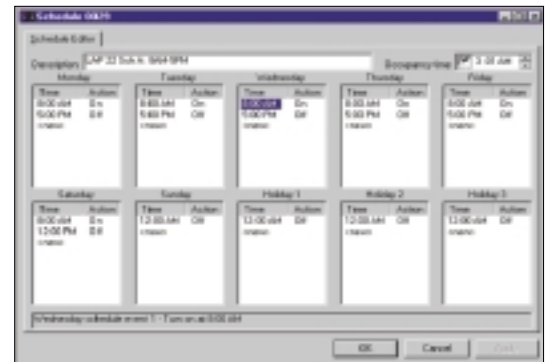
Optional software packages include:

WCHGR	WinControl Graphics Software (Windows-based) for Complete Control systems
WCGGR	WinControl Graphics Software (Windows-based) for GE Total Lighting Control systems

## Sample Software Screens & Reports



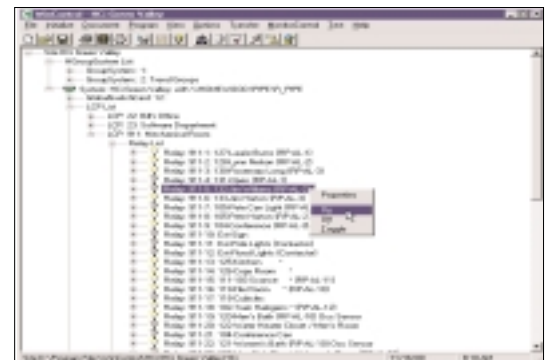
Users can access comprehensive system data, including device status, documentation, and programming.



This scheduling screen displays a week's worth of data for a control panel or other system device.



With activity reports, users can see exactly what occurred on a specific day.



From Explorer view screens such as this, users can view and control relays and other system components.