

ALR
NEW
PRODUCT
LOOKBOOK



Q2 2023

Table of Contents



Decorative
Architectural
Downlight and Track
Specialized Application
Outdoor

Decorative

ALORA

REMY

- Inspired by Japanese design
- Pendant, ceiling surface, sconce/vanity, table & floor lamps
- JA8 compliant when paired with a compliant lamp
- Matte Black, Matte White finish with Brushed Gold interior shade, also available in Brushed Gold.



ALVA

HELEN

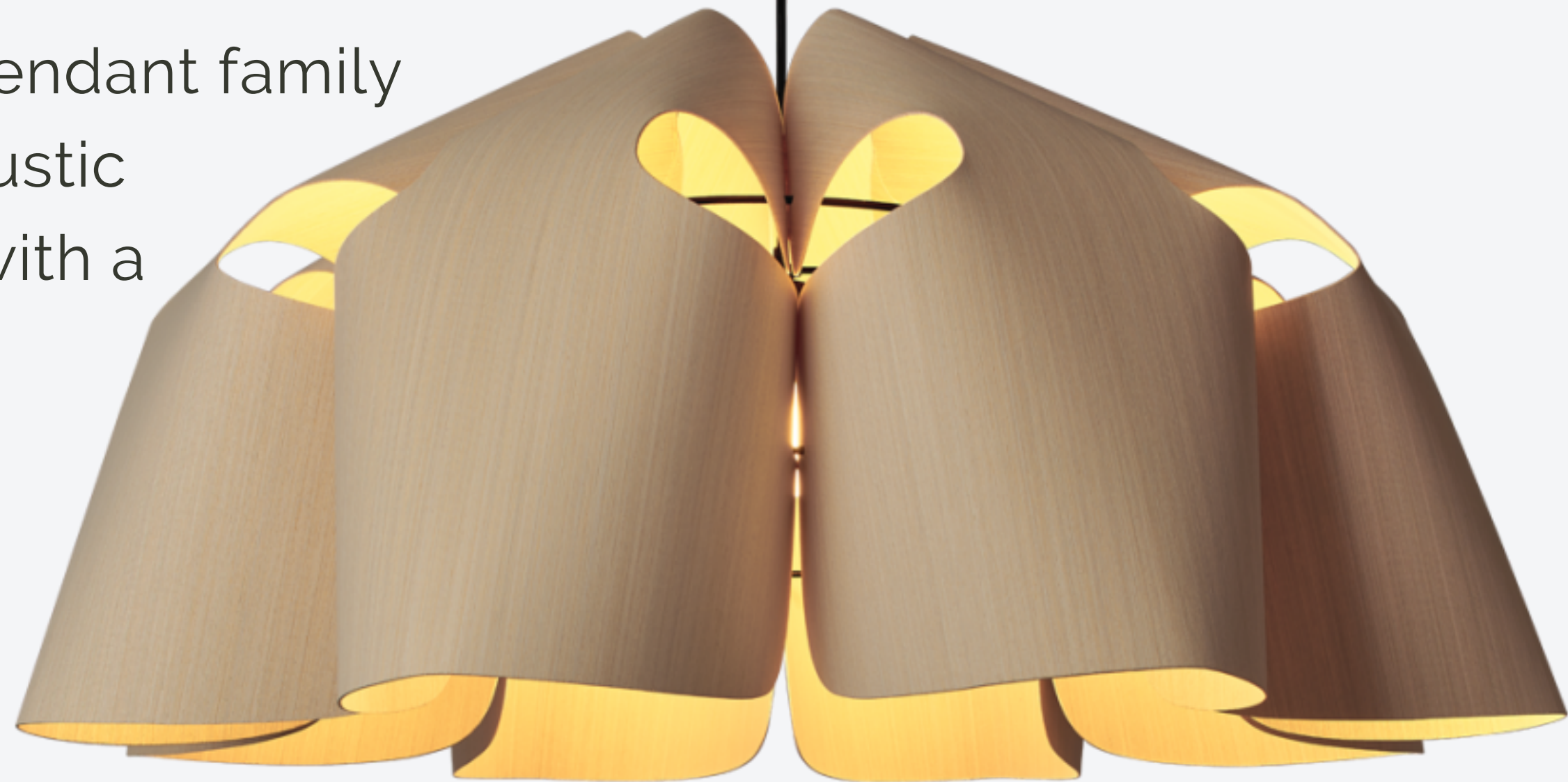
- ADA compliant candelabra style sconce
- Durable resin shade
- Shade permanently mounted to sconce



BRUCK

VICTORIA

- Latest addition to the WEP pendant family
- Offered in wood or wool acoustic
- JA8 compliant when paired with a compliant lamp



DELTA LIGHT

MAGNETIC

MODULES

Shiftline and Splitline are surface mount lighting systems with options for magnetic linear profiles and spots.



KUZCO BRUNI

- Pendant and chandeliers with adjustable rings
- Rectangular profile, circular silhouette, ribbed acrylic diffuser
- Black and Brushed Gold finishes
- ELV Dimming
- 24" delivers 2050 lumens



LUCEPLAN

DOI

- Aluminum cylinder, iron counterweight
- White, Matte Black, Matte Brass
- 2700 or 3000K
- 300 delivered lumens



LUCEPLAN

MALAMATA

- Family includes pendant, plug-in sconce, and portable
- Light can be adjusted using spherical counterweight
- Steel structure, hand blown glass globe
- Matte black or brushed gold hardware
- Pendant offered in two scales, portable and wall sconce offered in one



SONNEMAN

FINO PENDANT

- Ultra thin at $\frac{3}{4}$ " diameter
- 36", 48", 60", 72" lengths
- Satin Black or Polished Chrome finish
- 17W/1550 lumens
- 3000K, 3500K
- Triac/ELV/0-10V dimmer



SONNEMAN HAIM

- Wall-mounted spotlights
- Vertical or horizontal orientation
- Single or twin configurations
- Optional up-light



SONNEMAN

LUNA

- Racetrack pendant
- Delivers up to 45,000 lumens
- Satin Brass or Matte Black finish



Architectural

ZUMTOBEL

MELLOWLIGHT IV

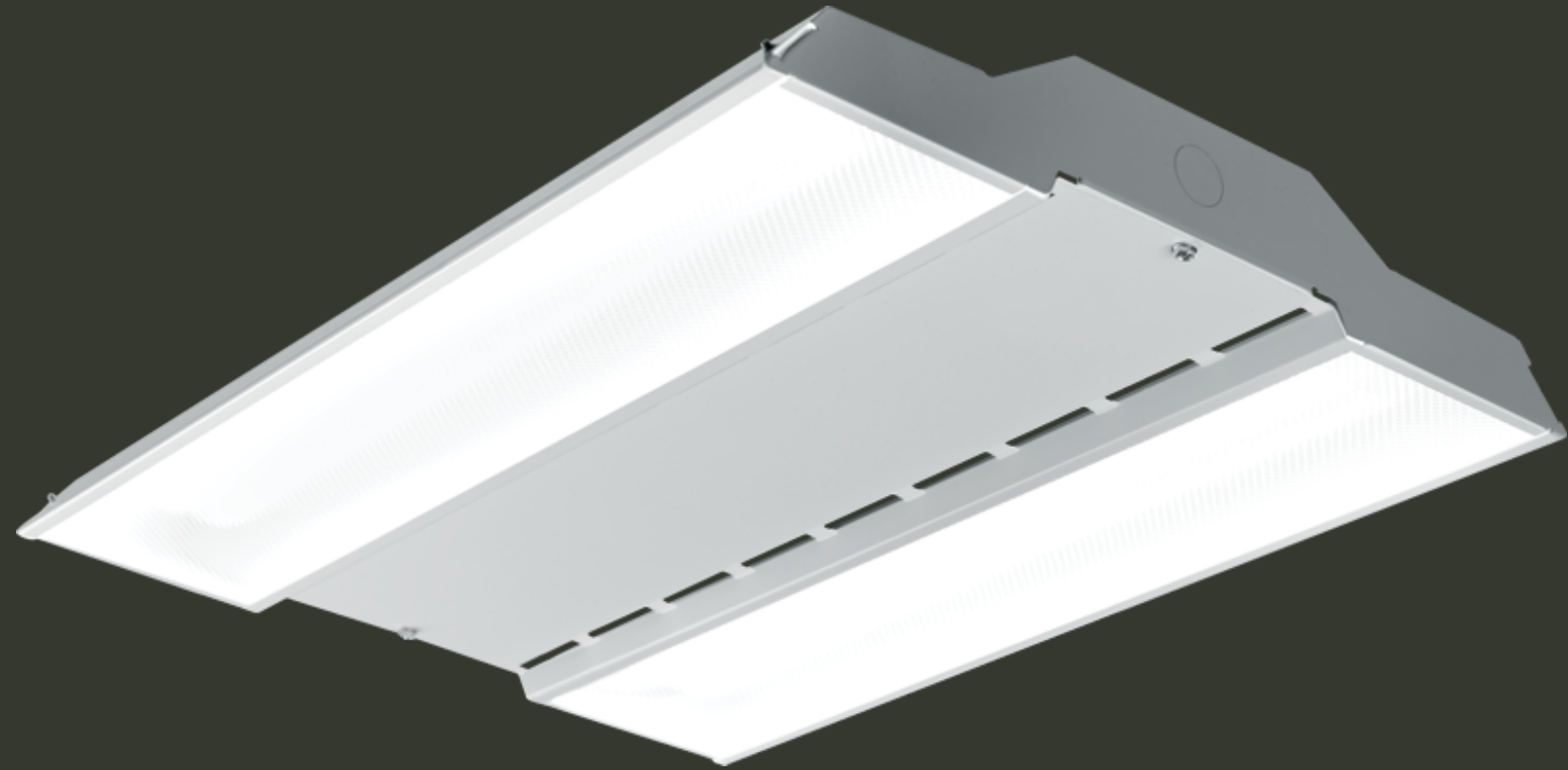
- Updated version of a Zumtobel classic. Optional mesh grid or split diffuser optic.
- Available as 1x4, 2x2, 2x4
- Static or tunable white
- Up to 10,000 delivered lumens



THE WILLIAMS

GS HIGH BAY

- Ultra-low profile (2 9/16" deep)
- Delivers up to 155 lm/W
- Medium and narrow distribution options
- BAA Compliant
- Max ambient temp 55°C
- Up to 48,000 delivered lumens



Downlight +

Track

FOCAL POINT

ID 3.5 PURE

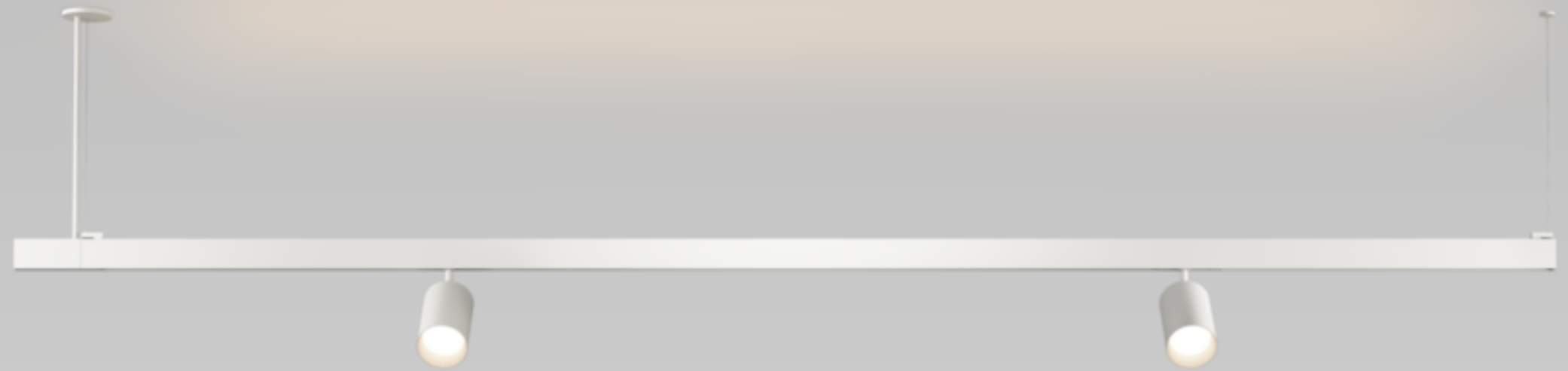
- 3.5" Cylinder offered in 4" and 7" lengths
- Cord, fixed stem, 50° swivel stem or surface mount
- 700-2300 delivered lumens
- Optics include:
 - Narrow Flood to Super Wide Flood,
 - Wall Wash
- Three tunable white ranges:
 - 1800-4000K
 - 2700-5000K
 - 2700-6500K
- Mini power canopy
- 0-10V 1% & phase dimming
- White, Black, Palladium Silver,
or custom color



LUCIFER

UPLIGHT TRACK

- 24V linear source integrated into an line voltage track extrusion
- Delivers 310 lm/ft
- Driver for linear uplight accommodates 48' track
- 90+ CRI
- 2200K, 2700K, 3000K, 3500K, 4000K



ALPHABET NU TAMPER RESISTANT DOWNLIGHTS

- 4", 6" Alphabet Nu downlights
- Static white only, fixed and adjustable
- Machined aluminum frame with stainless-steel tamper-resistant screws
- NSF Rated
- Design to meet NYS-OMH requirements for mental health facilities
- Optics ranging from 40° to 70°
- Anti-bacterial finish optional



Specialized Application

FOCAL POINT

LIA

- Acoustic pendant comprised of PET felt fins
- Delivered lumens range from 2,000 to 17,000 lumens
- Three diameters and six size variations
- 3', 4', or 5' diameter
- 12" or 18" height
- 24 PET felt colors
- Four housing paint colors with optional matching stem and canopy
- Matte Satin White
- Titanium Silver
- Matte Black
- Gloss Modest Mushroom



BRUCK

HUSH ACOUSTIC SCONCE

- Decorative acoustic wall sconce
- Two sizes:
 - 6 1/4" x 8 3/4"
 - 9 1/16" x 10 5/8"
- Green, blue, light gray, dark gray finish options
- Delivers 550 lumens
- ADA compliant
- 2700K, 3000K, 90 CRI



KENALL

HELOS

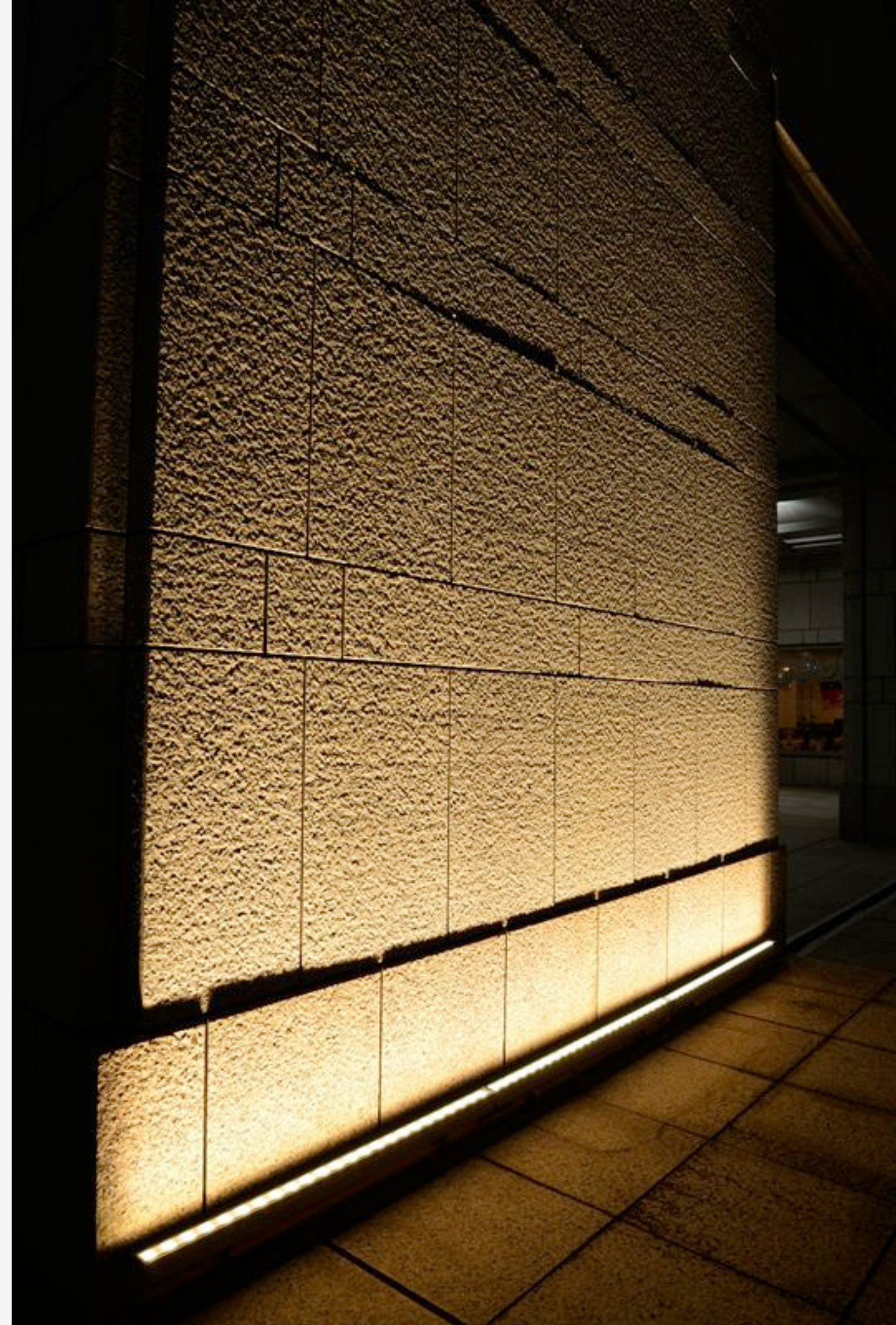
- Edge-lit parking structure luminaire
- Downlight only
- 7lb – weighs less than half of its closest competitor
- Available with TekLink wireless control
- 4000-10,000 nominal lumens



CORE

LFO-100

- 24V flexible LED strip for indoor and outdoor applications
- Bend radius of at least 4"
- Stainless installation chain available for straight runs
- 11W/ft, 703-954lm
- 90 CRI: 27K/30K/35/K40K/50K
- Miniature optics include:
 - 20°
 - 20°
 - 45°
 - 60°
 - 20x45
- ELV, 0-10V, and TRIAC Dimming



CORE

SLINQ

- Flexible 360° round neon-style linear
- Outdoor rated
- Pendant, suspended, flush mounting
- Flexibility allows for arches and free form design
- Six CCT: 2200, 2700, 3000, 3500, 4000, 5000K



Outdoor

BEGA

BOLLARD

- Offered with asymmetric and asymmetric wide beam distributions
- 39"H
- 11.5W, delivers up to 1900 lumens



BK

MINI YUKON

- Petite path light with integrated driver
- 8W/500 delivered lumens
- Indirect LED array with wide or forward throw optic
- DMX control with RDM
- 80 or 90+ CRI
- 2700K, 3000K, 3500K, 4000K



DELTA LIGHT

OONO

- Available as a lantern, bollard and wall sconce
- Offered in Black, Gold Marble, and White finishes options
- Outdoor rated



GRIVEN

JUPITER B

- Compact medium-throw exterior rated flood
- Static white, 2700K, 3000K, 4000K
- On/off, DALI, 0-10V
- 8 optic options:
 - 12° spot
 - 15° narrow
 - 25° medium
 - 47° wide
 - 61° extra wide
 - 39° x 14° ELH
 - 37° x 22° ELWH
- Options include:
 - Marine grade finish
 - 3G mounting yoke
 - Internal honeycomb louver



GRIVEN

MARS

- Architectural high-performance exterior flood
- Available in static white, tunable white, and RGBW
- Spot, flood or wall wash optic
- DMX control with RDM



Index

Decorative

[Alora Remy](#)

[Alva Helen](#)

[Bruck Victoria](#)

[Delta Light Magnetic Modules](#)

[Kuzco Bruni](#)

[LucePlan Doi](#)

[LucePlan Malamata](#)

[Sonneman Fino Pendant](#)

[Sonneman Haim](#)

[Sonneman Luna](#)

Architectural

[Zumtobel Mellowlight IV](#)

[HE Williams GS High Bay](#)

-

Downlight and Track

[Focal Point ID3.5 Cylinder](#)

[Lucifer Uplight Track](#)

[Alphabet Nu TR Downlights](#)

Specialized Application

[Focal Point Lia Acoustic](#)

[Bruck Hush Acoustic](#)

[Kenall Helos](#)

[Core LFO-1000](#)

[Core Sling](#)

Outdoor

[Bega Bollard](#)

[BK Mini Yukon](#)

[Delta Light Oono](#)

[Griven Jupiter](#)

[Griven Mars](#)